



GIA
GEM TRADE LABORATORY

New York Headquarters
580 Fifth Avenue | New York, NY 10036-4794
T: 212-221-5858 | F: 212-575-3095

Carlsbad
5355 Armada Drive | Carlsbad, CA 92008-4699
T: 760-603-4500 | F: 760-603-1814

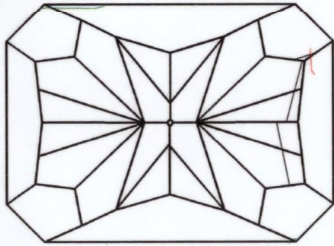
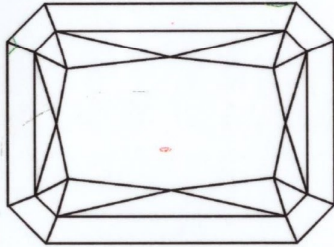
**COLORED DIAMOND
GRADING REPORT**

GIA REPORT 12368655

January 30, 2003
Shape and Cutting Style CUT-CORNERED
RECTANGULAR MODIFIED BRILLIANT
Measurements 6.89 x 5.92 x 3.94 mm
Weight 1.51 carat

Proportions
Depth 66.6 %
Table 68 %
Girdle VERY THIN TO THICK
Culet NONE
Finish
Polish GOOD
Symmetry FAIR
Clarity Grade VS1
Color
Origin NATURAL
Grade FANCY LIGHT
..... YELLOW
Distribution EVEN
Fluorescence NONE

Comments:
Additional extra facet is not shown.



KEY TO SYMBOLS

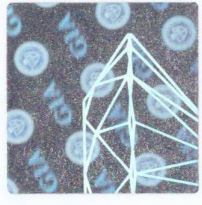
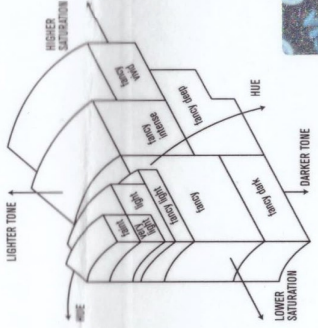
- Feather
- Cloud
- Needle
- Natural
- Extra Facet

**GIA
CLARITY
SCALE**

| | | | | |
|------------------------------------|-----------------------------------|---------------------------|-------------------|----------------|
| FLAWLESS INTERNALLY FLAWLESS | VERY VERY SLIGHTLY INCLUDED | VERY SLIGHTLY INCLUDED | SLIGHTLY INCLUDED | INCLUDED |
| VS ₁ | VS ₂ | VS ₁ | VS ₂ | |
| | | SI ₁ | SI ₂ | |
| | | | | I ₁ |
| | | | | I ₂ |
| | | | | I ₃ |

**GIA
COLORED
DIAMOND
SCALE**

Illustration of GIA
fancy color grade
interrelationships



117482001

This Report is not a guarantee, valuation or appraisal. This Report contains only the characteristics of the diamond described herein after it has been graded, tested, examined and analyzed by GIA Gem Trade Laboratory under 10X magnification, and/or has been inscribed, using the techniques and equipment available to GIA Gem Trade Laboratory at the time of the examination and/or at the time of being inscribed, including fully corrected triplet loupe and binocular microscope, master comparison diamonds, standardized viewing environment and light source, electronic carat balance, high intensity short wave fluorescence imaging system, optical measuring device, micro laser inscribing device, ProportionScope[®], ultraviolet lamps, millimeter gauge, additional visual color comparators, spectroscope, Illuminator Polariscope[®], immersion liquids, ultraviolet-visible and infrared spectrometers, X-ray fluorescence spectrometer, gamma-ray spectroscopy systems, beta radiation scintillation detector, radiation survey meter, X-ray luminescence equipment, and ancillary instruments as necessary. Red symbols denote internal characteristics (inclusions). Green or black symbols denote external characteristics (blemishes). Diagram is an approximate representation of the diamond, and symbols shown indicate type, position, and approximate size of clarity characteristics. All clarity characteristics may not be shown. Details of finish are not shown. The recipient of this Report may wish to consult a credentialed Jeweler or Gemologist about the importance and interrelationship of cut, color, clarity and carat weight.

IMPORTANT DOCUMENT, STORE SAFELY

The security features in this document, including the hologram, security screen, microprint lines and color change ink, are designed to help you ensure document security industry guidelines.

NOTICE: IMPORTANT LIMITATIONS ON BACK

COPYRIGHT ©2000 GEMOLOGICAL INSTITUTE OF AMERICA, INC.