



GIA
GEM TRADE LABORATORY®

New York Headquarters
580 Fifth Avenue | New York, NY 10036-4794
T: 212-221-5658 | F: 212-575-3095

Carlsbad

5355 Armada Drive | Carlsbad, CA 92008-4699
T: 760-603-4500 | F: 760-603-1814

**COLORED DIAMOND
IDENTIFICATION AND ORIGIN REPORT**

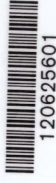
March 14, 2003

Shape and Cutting StyleCUT-CORNERED
RECTANGULAR MODIFIED BRILLIANT
Measurements7.06 x 5.86 x 4.25 mm
Weight1.63 carat

Color
OriginNATURAL
GradeFANCY LIGHT
.....YELLOW
Distribution

Comments:
None

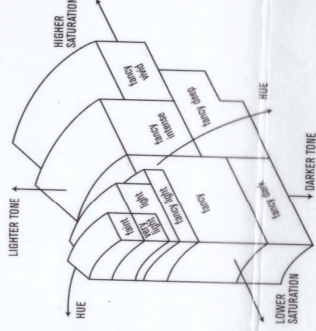
GIA REPORT 12404857



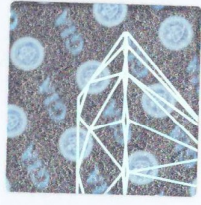
120625601

**GIA
COLORED
DIAMOND
SCALE**

Illustration of GIA
fancy color grade
interrelationships



This Report is not a guarantee, valuation or appraisal. This Report contains only the characteristics of the diamond described herein after it has been graded, tested, examined and analyzed by GIA Gem Trade Laboratory under magnification, and/or has been inscribed, using the techniques and equipment available to GIA Gem Trade Laboratory at the time of the examination and/or at the time of being inscribed, including magnification, master color comparison diamonds, standardized viewing environment and light source, electronic carat balance, high intensity short wave fluorescence imaging system, optical measuring device, micro laser inscribing device, ProportionScope®, ultraviolet lamps, millimeter gauge, additional visual color comparators, spectroscope, Illuminator PolarScope®, immersion liquids, ultraviolet-visible and infrared spectrometers, X-ray fluorescence spectrometer, gamma-ray spectroscopy systems, beta radiation scintillation detector, radiation survey meter, X-ray luminescence equipment, and ancillary instruments as necessary. The recipient of this Report may wish to consult a credentialed Jeweler or Gemologist about the information contained herein.



IMPORTANT DOCUMENT, STORE SAFELY
The security features in this document, including the security screen, microprint lines and digital watermark, are designed to prevent unauthorized copying, alteration, or use. Exceed document security industry guidelines.

NOTICE: IMPORTANT LIMITATIONS ON BACK

COPYRIGHT © 2000 GEMOLOGICAL INSTITUTE OF AMERICA, INC.