



**GIA**  
GEM TRADE LABORATORY

New York Headquarters  
580 Fifth Avenue | New York, NY 10036-4794  
T: 212-221-5858 | F: 212-575-3095

Carlsbad  
5355 Armada Drive | Carlsbad, CA 92008-4699  
T: 760-603-4500 | F: 760-603-1814

**COLORED DIAMOND  
GRADING REPORT**

GIA REPORT 12408217

March 14, 2003

Shape and Cutting Style ..... **CUT-CORNERED**

..... **RECTANGULAR MODIFIED BRILLIANT**

Measurements ..... **6.22 x 4.96 x 3.62 mm**

Weight ..... **1.06 carat**

**Proportions**

Depth ..... **73.0 %**

Table ..... **63 %**

Girdle ..... **MEDIUM TO THICK**

Culet ..... **NONE**

**Finish**

Polish ..... **GOOD**

Symmetry ..... **GOOD**

Clarity Grade ..... **WVS2**

**Color**

Origin ..... **NATURAL**

Grade ..... **FANCY LIGHT**

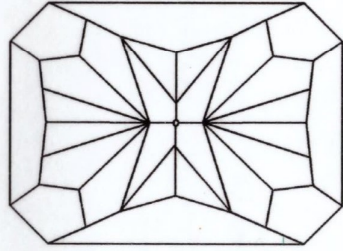
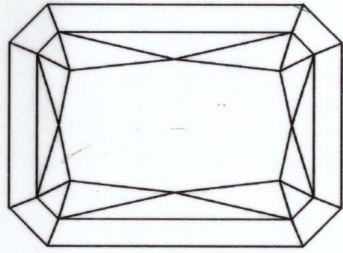
..... **YELLOW**

Distribution ..... **EVEN**

Fluorescence ..... **NONE**

**Comments:**

**NONE**



**GIA  
CLARITY  
SCALE**

FLAWLESS  
INTERNALLY  
FLAWLESS

VERY VERY  
SLIGHTLY  
INCLUDED

VERY SLIGHTLY  
INCLUDED

SLIGHTLY INCLUDED

INCLUDED

VS<sub>1</sub>

VS<sub>2</sub>

VS<sub>1</sub>

VS<sub>2</sub>

SI<sub>1</sub>

SI<sub>2</sub>

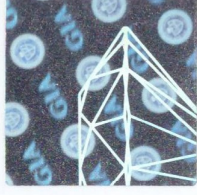
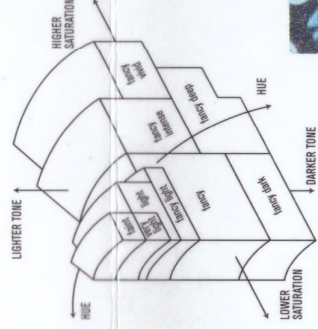
I<sub>1</sub>

I<sub>2</sub>

I<sub>3</sub>

**GIA  
COLORED  
DIAMOND  
SCALE**

Illustration of GIA  
fancy color grade  
interrelationships



This Report is not a guarantee, valuation or appraisal. This Report contains only the characteristics of the diamond described herein after it has been graded, tested, examined and analyzed by GIA Gem Trade Laboratory under 10X magnification, and/or has been inscribed, using the techniques and equipment available to GIA Gem Trade Laboratory at the time of the examination and/or at the time of being inscribed, including fully corrected triplet loupe and binocular microscope, master color comparison diamonds, standardized viewing environment and light source, electronic carat balance, high intensity short wave fluorescence imaging system, optical measuring device, micro laser inscribing device, ProportionScope®, ultraviolet lamps, millimeter gauge, additional visual color comparators, spectroscope, Numinator Phtarscope®, immersion liquids, ultraviolet-visible and infrared spectrometers, X-ray fluorescence spectrometer, gamma-ray spectroscopy systems, beta radiation scintillation detector, radiation survey meter, X-ray luminescence equipment, and ancillary instruments as necessary. Red symbols denote internal characteristics (inclusions). Green or black symbols denote external characteristics (blemishes). Diagram is an approximate representation of the diamond, and symbols shown indicate type, position, and approximate size of clarity characteristics. All clarity characteristics may not be shown. Details of finish are not shown. The recipient of this Report may wish to consult a credentialed Jeweler or Gemologist about the importance and interrelationship of cut, color, clarity and carat weight.

**KEY TO SYMBOLS**

Pinpoint  
Natural

**IMPORTANT DOCUMENT, STORE SAFELY**

The security features in this document, including the tamper-evident, non-removable, non-reproducible and non-transferable security features, are designed to ensure the accuracy and integrity of the information contained herein. For more information, please contact your nearest GIA office.

**NOTICE: IMPORTANT  
LIMITATIONS ON BACK**

COPYRIGHT © 2000 GEMOLOGICAL INSTITUTE OF AMERICA, INC.