



C306931

GIA REPORT 12464050

DIAMOND GRADING REPORT

March 06, 2003

Shape and Cutting Style ROUND BRILLIANT
 Measurements 6.46 - 6.51 x 3.96 mm
 Weight 1.02 carat

Proportions
 Depth 61.1 %
 Table 60 %

Girdle EXTREMELY THIN TO SLIGHTLY THICK,
 FACETED
 Culet NONE

Finish
 Polish VERY GOOD
 Symmetry VERY GOOD

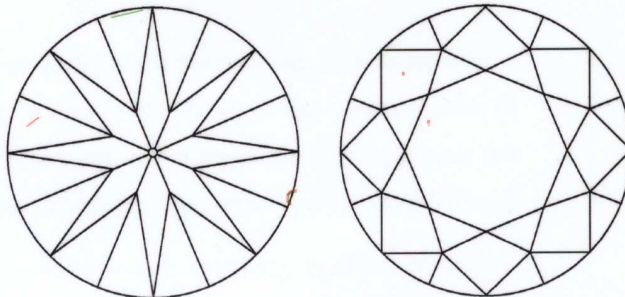
Clarity Grade VS2
 Color Grade G
 Fluorescence NONE

Comments:
 Additional pinpoints are not shown.

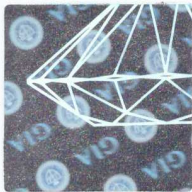
Duplicate printed on September 16, 2004

KEY TO SYMBOLS

- ✓ Natural
- Crystal
- Pinpoint
- ▽ Indented Natural
- ~ Feather



GIA CLARITY SCALE		GIA COLOR SCALE	
I ₁	VERY VERY SLIGHTLY INCLUDED	D	COLORLESS
I ₂	SLIGHTLY INCLUDED	E	NEAR COLORLESS
I ₃	INCLUDED	F	FAN
		G	VERY LIGHT
		H	LIGHT
		I	
		J	
		K	
		L	
		M	
		N	
		O	
		P	
		Q	
		R	
		S	
		T	
		U	
		V	
		W	
		X	
		Y	
		Z	



IMPORTANT DOCUMENT, STORE SAFELY

The security features in this document including the hologram, security screen, microprint lines and diamond identifier, in addition to those not listed, are designed to prevent tampering.

NOTICE: IMPORTANT LIMITATIONS ON BACK

COPYRIGHT © 2000 GEMOLOGICAL INSTITUTE OF AMERICA, INC.

This Report is not a guarantee, valuation or appraisal. This Report contains only the characteristics of the diamond described herein after it has been graded, tested, examined and analyzed by GIA Gem Trade Laboratory under 10X magnification, and/or has been inscribed, using the techniques and equipment available to GIA Gem Trade Laboratory at the time of the examination and/or at the time of being inscribed, including fully corrected triplet loupe and binocular microscope, master color comparison diamonds, standardized viewing environment and light source, electronic carat balance, short wave fluorescence imaging system, short wave ultraviolet transmission detection system, optical measuring device, micro laser inscribing device, ProportionScope®, ultraviolet lamps, millimeter gauge, and ancillary instruments as necessary. Red symbols denote internal characteristics (inclusions). Green or black symbols denote external characteristics (blemishes). Diagram is an approximate representation of the diamond, and symbols shown indicate type, position, and approximate size of clarity characteristics. All clarity characteristics may not be shown. Details of finicity are not shown. The recipient of this Report may wish to consult a credentialed Jeweler or Gemologist about the importance and interrelationship of cut, color, clarity and carat weight.

171350401

New York Headquarters
 580 Fifth Avenue | New York, NY 10036-4794
 T: 212-221-5858 | F: 212-575-3095

Carlsbad
 5355 Armada Drive | Carlsbad, CA 92008-4699
 T: 760-603-4500 | F: 760-603-1814