



**GIA**  
GEM TRADE LABORATORY

New York Headquarters  
580 Fifth Avenue | New York, NY 10036-4794  
T: 212-221-5858 | F: 212-575-3095

Carlsbad  
5355 Armada Drive | Carlsbad, CA 92008-4699  
T: 760-603-4500 | F: 760-603-1814

**DIAMOND GRADING REPORT**

August 06, 2003

Shape and Cutting Style ..... CUT-CORNERED  
RECTANGULAR MODIFIED BRILLIANT  
Measurements ..... 7.64 x 6.55 x 4.44 mm  
Weight ..... 2.01 carat

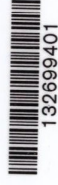
**Proportions**

Depth ..... 67.8 %  
Table ..... 65 %  
Girdle ..... THIN TO MEDIUM  
Culet ..... NONE  
Finish

Polish ..... VERY GOOD  
Symmetry ..... GOOD  
Clarity Grade ..... VS2  
Color Grade ..... H  
Fluorescence ..... NONE

**Comments:**

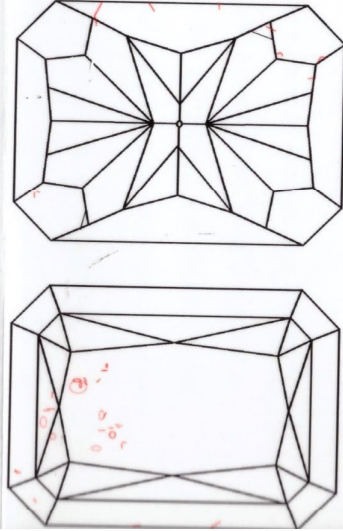
Additional clouds are not shown.



132699401

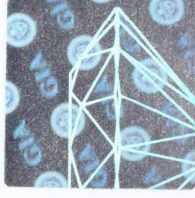
This Report is not a guarantee, valuation or appraisal. This Report contains only the characteristics of the diamond described herein after it has been graded, tested, examined and analyzed by GIA Gem Trade Laboratory under 10X magnification, and/or has been inscribed, using the techniques and equipment available to GIA Gem Trade Laboratory at the time of the examination and/or at the time of being inscribed, including fully corrected triplet loupe and binocular microscope, master color comparison diamonds, standardized viewing environment and light source, electronic carat balance, synthetic diamond screening device, high intensity short wave fluorescence imaging system, short wave ultraviolet transmission detection system, optical measuring device, micro laser inscribing device, ProportionScope®, ultraviolet lamps, millimeter gauge, and ancillary instruments as necessary. Red symbols denote internal characteristics (inclusions). Green or black symbols denote external characteristics (blemishes). Diagram is an approximate representation of the diamond, and symbols shown indicate type, position, and approximate size of clarity characteristics. All clarity characteristics may not be shown. Details of finish are not shown. The recipient of this Report may wish to consult a credentialed Jeweler or Gemologist about the importance and interrelationship of cut, color, clarity and carat weight.

GIA CLARITY SCALE		GIA COLOR SCALE	
FLAWLESS	VERY VERY SLIGHTLY INCLUDED	D	COLORLESS
INTERNALLY FLAWLESS		E	
VS <sub>1</sub>	VERY SLIGHTLY INCLUDED	F	NEAR COLORLESS
VS <sub>2</sub>		G	
SI <sub>1</sub>	SLIGHTLY INCLUDED	H	FAINT
SI <sub>2</sub>		I	
I <sub>1</sub>	INCLUDED	J	VERY LIGHT
I <sub>2</sub>		K	
I <sub>3</sub>		L	
		M	
		N	
		O	
		P	
		Q	
		R	
		S	
		T	
		U	
		V	
		W	
		X	
		Y	
		Z	



**KEY TO SYMBOLS**

- Cloud
- ◊ Crystal
- ~ Feather
- ∧ Needle
- ∧ Extra Facet



**IMPORTANT DOCUMENT, STORE SAFELY**

The security features in this document, including the security number, color and clarity grade, in addition to those not listed, are the property of GIA Gem Trade Laboratory and are not to be reproduced.

**NOTICE: IMPORTANT LIMITATIONS ON BACK**

COPYRIGHT ©2000 GEMOLOGICAL INSTITUTE OF AMERICA, INC.