



GIA
GEM TRADE LABORATORY

New York Headquarters
580 Fifth Avenue | New York, NY 10036-4794
T: 212-221-5858 | F: 212-575-3095

Carlsbad
5355 Armada Drive | Carlsbad, CA 92008-4699
T: 760-603-4500 | F: 760-603-1814

DIAMOND GRADING REPORT

July 28, 2003

Shape and Cutting Style CUT-CORNERED
RECTANGULAR MODIFIED BRILLIANT
Measurements 7.57 x 6.60 x 4.53 mm
Weight 2.01 carat
Proportions
Depth 68.6 %

Table 67 %
Girdle SLIGHTLY THICK TO THICK
Culet NONE
Finish
Polish GOOD
Symmetry GOOD
Clarity Grade VS2
Color Grade H
Fluorescence NONE

Comments:
Surface graining is not shown.

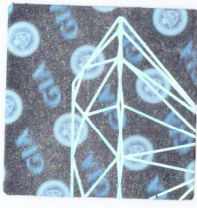
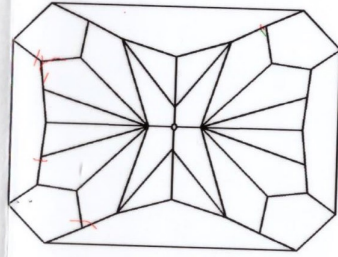
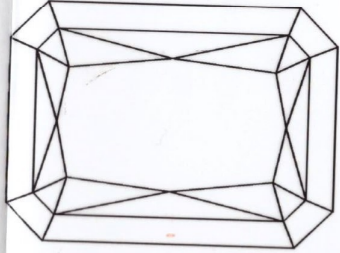
GIA REPORT 12764141



131764801

This Report is not a guarantee, valuation or appraisal. This Report contains only the characteristics of the diamond described herein after it has been graded, tested, examined and analyzed by GIA Gem Trade Laboratory under 10X magnification, and/or has been inscribed, using the techniques and equipment available to GIA Gem Trade Laboratory at the time of the examination and/or at the time of being inscribed, including fully corrected triplet loupe and binocular microscope, master color comparison diamonds, standardized viewing environment and light source, electronic carat balance, synthetic diamond screening device, high intensity short wave fluorescence imaging system, short wave ultraviolet transmission detection system, optical measuring device, micro laser inscribing device, ProportionScope®, ultraviolet lamps, millimeter gauge, and ancillary instruments as necessary. Red symbols denote internal characteristics (inclusions). Green or black symbols denote external characteristics (blemishes). Diagram is an approximate representation of the diamond, and symbols shown indicate type, position, and approximate size of clarity characteristics. All clarity characteristics may not be shown. Details of finish are not shown. The recipient of this Report may wish to consult a credentialed Jeweler or Gemologist about the importance and interrelationship of cut, color, clarity and carat weight.

GIA CLARITY SCALE		GIA COLOR SCALE	
FLAWLESS	D	COLORLESS	D
INTERNALLY FLAWLESS	E	NEAR COLORLESS	E
VVS ₁	F		F
VVS ₂	G		G
VS ₁	H		H
VS ₂	I		I
	J		J
	K		K
	L	FAINT	L
	M		M
	N		N
	O		O
	P	VERY LIGHT	P
	Q		Q
	R		R
	S		S
	T		T
	U		U
	V		V
	W		W
	X		X
	Y	LIGHT	Y
	Z		Z



KEY TO SYMBOLS

- Feather
- Cloud
- Pinpoint
- Natural

IMPORTANT DOCUMENT, STORE SAFELY

The security features in this document, including the background, the security screen, microprint lines and changeable security patterns, are for your protection. Do not attempt to alter or tamper with this document. Exceeding document security industry guidelines.

NOTICE: IMPORTANT LIMITATIONS ON BACK

COPYRIGHT ©2000 GEMOLOGICAL INSTITUTE OF AMERICA, INC.