



GIA
GEM TRADE LABORATORY

New York Headquarters
580 Fifth Avenue | New York, NY 10036-4794
T: 212-221-5858 | F: 212-575-3095

Carlsbad

5355 Armada Drive | Carlsbad, CA 92008-4699
T: 760-603-4500 | F: 760-603-1814

**COLOR DIAMOND
GRADING REPORT**

GIA REPORT 12822603

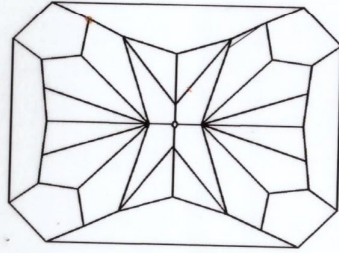
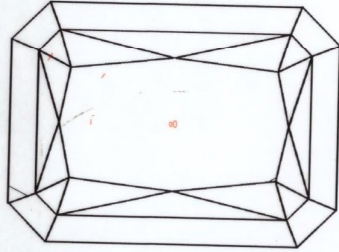
September 12, 2003

Shape and Cutting Style CUT-CORNERED
RECTANGULAR MODIFIED BRILLIANT
Measurements 9.74 x 8.55 x 5.37 mm
Weight 4.18 carat

Proportions

Depth 62.8 %
Table 68 %
Girdle THIN TO THICK
Culet NONE
Finish
Polish GOOD
Symmetry GOOD
Clarity Grade VS2
Color
Origin NATURAL
Grade FANCY LIGHT
Distribution YELLOW
Fluorescence EVEN
Fluorescence NONE

Comments:
NONE



KEY TO SYMBOLS

- Crystal
- ~ Feather
- ∧ Needle
- ∨ Indented Natural
- ∧ Extra Facet

**GIA
CLARITY
SCALE**

FLAWLESS

INTERNALLY
FLAWLESS

VS₁

VS₂

VS₁

VS₂

SI₁

SI₂

I₁

I₂

I₃

VERY VERY
SLIGHTLY
INCLUDED

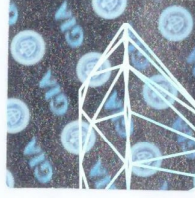
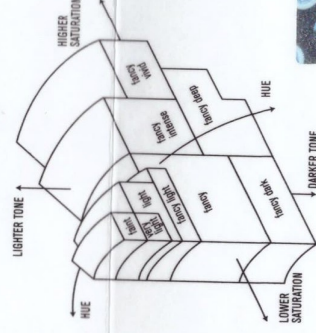
VERY SLIGHTLY
INCLUDED

SLIGHTLY INCLUDED

INCLUDED

**GIA
COLORED
DIAMOND
SCALE**

Illustration of GIA
fancy color grade
interrelationships



This Report is not a guarantee, valuation or appraisal. This Report contains only the characteristics of the diamond described herein after it has been graded, tested, examined and analyzed by GIA Gem Trade Laboratory under 10X magnification, and/or has been inscribed, using the techniques and equipment available to GIA Gem Trade Laboratory at the time of the examination and/or at the time of being inscribed, including fully corrected triplet loupe and binocular microscope, master color comparison diamonds, standardized viewing environment and light source, electronic carat balance, high intensity short wave fluorescence imaging system, optical measuring device, micro laser inscribing device, ProportionScope[®], ultraviolet lamps, millimeter gauge, additional visual color comparators, spectroscope, Illuminator PolarScope[®], immersion liquids, ultraviolet-visible and infrared spectrometers, X-ray fluorescence spectrometer, gamma-ray spectroscopy systems, beta radiation scintillation detector, radiation survey meter, X-ray luminescence equipment, and ancillary instruments as necessary. Red symbols denote internal characteristics (inclusions). Green or black symbols denote external characteristics (blemishes). Diagram is an approximate representation of the diamond, and symbols shown indicate type, position, and approximate size of clarity characteristics. All clarity characteristics may not be shown. Details of finish are not shown. The recipient of this Report may wish to consult a credentialed Jeweler or Gemologist about the importance and interrelationship of cut, color, clarity and carat weight.

This Report is not a guarantee, valuation or appraisal. This Report contains only the characteristics of the diamond described herein after it has been graded, tested, examined and analyzed by GIA Gem Trade Laboratory under 10X magnification, and/or has been inscribed, using the techniques and equipment available to GIA Gem Trade Laboratory at the time of the examination and/or at the time of being inscribed, including fully corrected triplet loupe and binocular microscope, master color comparison diamonds, standardized viewing environment and light source, electronic carat balance, high intensity short wave fluorescence imaging system, optical measuring device, micro laser inscribing device, ProportionScope[®], ultraviolet lamps, millimeter gauge, additional visual color comparators, spectroscope, Illuminator PolarScope[®], immersion liquids, ultraviolet-visible and infrared spectrometers, X-ray fluorescence spectrometer, gamma-ray spectroscopy systems, beta radiation scintillation detector, radiation survey meter, X-ray luminescence equipment, and ancillary instruments as necessary. Red symbols denote internal characteristics (inclusions). Green or black symbols denote external characteristics (blemishes). Diagram is an approximate representation of the diamond, and symbols shown indicate type, position, and approximate size of clarity characteristics. All clarity characteristics may not be shown. Details of finish are not shown. The recipient of this Report may wish to consult a credentialed Jeweler or Gemologist about the importance and interrelationship of cut, color, clarity and carat weight.

IMPORTANT DOCUMENT, STORE SAFELY



The security features in this document, including this report number, have been registered and are a trademark of GIA. In addition to the report number, every document security industry publication.

**NOTICE: IMPORTANT
LIMITATIONS ON BACK**

COPYRIGHT © 2000 GEOLOGICAL INSTITUTE OF AMERICA, INC.