



**GIA**  
GEM TRADE LABORATORY

New York Headquarters  
580 Fifth Avenue | New York, NY 10036-4794  
T: 212-221-5858 | F: 212-575-3095

Carlsbad  
5355 Armada Drive | Carlsbad, CA 92008-4699  
T: 760-603-4500 | F: 760-603-1814

COLORED DIAMOND  
GRADING REPORT

GIA REPORT 12859715

September 18, 2003

Shape and Cutting Style ..... CUT-CORNERED  
RECTANGULAR MODIFIED BRILLIANT

Measurements ..... 6.86 x 5.55 x 3.98 mm

Weight ..... 1.40 carat

Proportions

Depth ..... 71.7 %

Table ..... 66 %

Girdle ..... THICK

Culet ..... NONE

Finish

Polish ..... GOOD

Symmetry ..... GOOD

Clarity Grade ..... VS2

Color

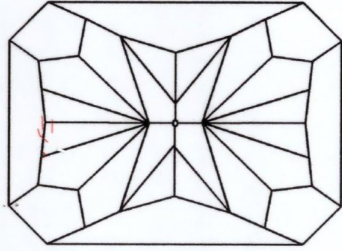
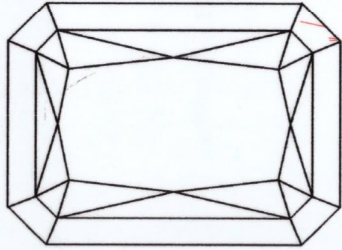
Origin ..... NATURAL

Grade ..... FANCY LIGHT  
YELLOW

Distribution ..... EVEN

Fluorescence ..... FAINT

Comments:  
NONE



KEY TO SYMBOLS

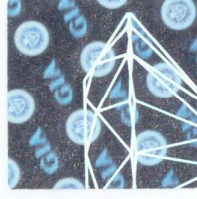
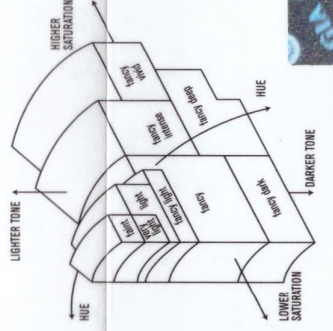
Feather  
Indented Natural

GIA  
CLARITY  
SCALE

FLAWLESS	VERY VERY SLIGHTLY INCLUDED	VERY SLIGHTLY INCLUDED	SLIGHTLY INCLUDED	INCLUDED
INTERNALLY FLAWLESS	VS <sub>1</sub>	VS <sub>2</sub>	S <sub>1</sub>	S <sub>2</sub>
	I <sub>1</sub>	I <sub>2</sub>	I <sub>3</sub>	

GIA  
COLORED  
DIAMOND  
SCALE

Illustration of GIA  
fancy color grade  
interrelationships



This Report is not a guarantee, valuation or appraisal. This Report contains only the characteristics of the diamond described herein after it has been graded, tested, examined and analyzed by GIA Gem Trade Laboratory under 10X magnification and/or has been inscribed, using the techniques and equipment available to GIA Gem Trade Laboratory at the time of the examination and/or at the time of being inscribed, including fully corrected triplet loupe and binocular microscope, master color comparison diamonds, standardized viewing environment and light source, electronic carat balance, high intensity short wave fluorescence imaging system, optical measuring device, micro laser inscribing device, ProportionScope® ultraviolet lamps, millimeter gauge, additional visual color comparators, spectroscope, Illuminator PolyScope®, immersion liquids, ultraviolet visible and infrared spectrometers, X-ray fluorescence spectrometer, gamma-ray spectroscopy systems, beta radiation scintillation detector, radiation survey meter, X-ray luminescence equipment, and ancillary instruments as necessary. Red symbols denote internal characteristics (inclusions). Green or black symbols denote external characteristics (blemishes). Diagram is an approximate representation of the diamond, and symbols shown indicate type, position, and approximate size of clarity characteristics. All clarity characteristics may not be shown. Details of finish are not shown. The recipient of this Report may wish to consult a credentialed Jeweler or Gemologist about the importance and interrelationship of cut, color, clarity and carat weight.

IMPORTANT DOCUMENT, STORE SAFELY

The security features in this document, including the hologram, security screen, microprint lines and other document security industry guidelines.

NOTICE-IMPORTANT  
LIMITATIONS ON BACK

COPYRIGHT ©2000 GEMOLOGICAL INSTITUTE OF AMERICA, INC.