



GIA
GEM TRADE LABORATORY

New York Headquarters
580 Fifth Avenue | New York, NY 10036-4794
T: 212-221-5858 | F: 212-575-5095

Carlsbad
5355 Armada Drive | Carlsbad, CA 92008-4699
T: 760-603-4500 | F: 760-603-1814

**COLORED DIAMOND
GRADING REPORT**

GIA REPORT 12930361

October 24, 2003

Shape and Cutting Style CUT-CORNERED
RECTANGULAR MODIFIED BRILLIANT
Measurements 8.79 x 8.16 x 5.22 mm
Weight 3.62 carat

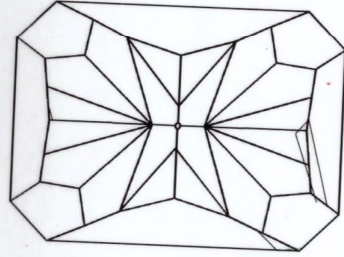
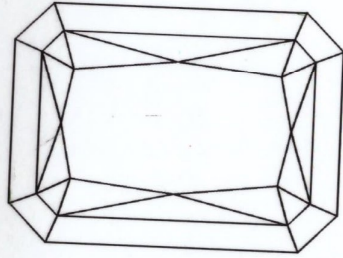
Proportions

Depth 64.0 %
Table 69 %
Girdle MEDIUM TO VERY THICK
Culet NONE
Finish

Polish GOOD
Symmetry GOOD
Clarity Grade VVS2
Color

Origin NATURAL
Grade FANCY LIGHT
Distribution YELLOW
Fluorescence EVEN
Comments: STRONG BLUE

NONE



KEY TO SYMBOLS

- Crystal
- Pinpoint
- △ Natural
- ∧ Extra Facet



140264101

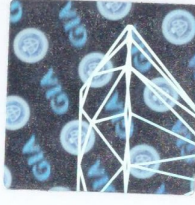
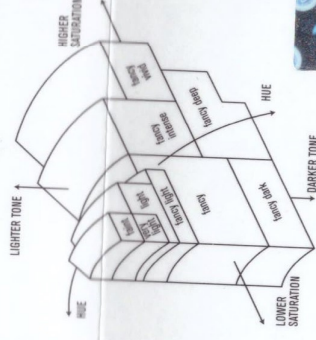
This Report is not a guarantee, valuation or appraisal. This Report contains only the characteristics of the diamond described herein after it has been graded, tested, examined and analyzed by GIA Gem Trade Laboratory under 10X magnification, and/or has been inscribed, using the techniques and equipment available to GIA Gem Trade Laboratory at the time of the examination and/or at the time of being inscribed, including fully corrected triplet loupe and binocular microscope, master color comparison diamonds, standardized viewing environment and light source, electronic carat balance, high intensity short wave fluorescence imaging system, optical measuring device, micro laser inscribing device, Proportionscope®, ultraviolet lamps, millimeter gauge, additional visual color comparators, spectroscopic illuminator Polariscopes®, immersion liquids, ultraviolet-visible and infrared spectrometers, X-ray fluorescence spectrometer, gamma-ray spectroscopy systems, beta radiation scintillation detector, radiation survey meter, X-ray luminescence equipment, and ancillary instruments as necessary. Red symbols denote internal characteristics (inclusions). Green or black symbols denote external characteristics (blemishes). Diagram is an approximate representation of the diamond, and symbols shown indicate type, position, and approximate size of clarity characteristics. All clarity characteristics may not be shown. Details of finish are not shown. The recipient of this Report may wish to consult a credentialed Jeweler or Gemologist about the importance and interrelationship of cut, color, clarity and carat weight.

**GIA
CLARITY
SCALE**

FLAWLESS	VERY VERY SLIGHTLY INCLUDED	VERY SLIGHTLY INCLUDED	SLIGHTLY INCLUDED	INCLUDED
IF	VS ₁	VS ₂	S ₁	I ₁
INTERNAL FLAWLESS	VS ₂	S ₁	S ₂	I ₂
				I ₃

**GIA
COLORED
DIAMOND
SCALE**

Illustration of GIA
brilliant color grades
interrelationships



IMPORTANT DOCUMENT, STORE SAFELY

The security features in this document, including the diamond image, are visible only when viewed under proper lighting conditions. For additional information, please contact your nearest GIA Gem Trade Laboratory.

**NOTICE: IMPORTANT
LIMITATIONS ON BACK**

COPYRIGHT ©2000 GEOLOGICAL INSTITUTE OF AMERICA, INC.