



GIA GEM TRADE LABORATORY

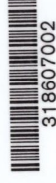
New York Headquarters
580 Fifth Avenue | New York, NY 10036-4794
T: 212-221-6868 | F: 212-575-3095

Carlsbad
5355 Armada Drive | Carlsbad, CA 92008-4699
T: 760-603-4500 | F: 760-603-1814

DIAMOND GRADING REPORT

GIA REPORT 14614753

August 05, 2005
Shape and Cutting Style ROUND BRILLIANT
Measurements 7.53 - 7.58 x 4.42 mm
Weight 1.52 carat
Proportions
Depth 58.5 %
Table 63 %
Girdle THIN TO SLIGHTLY THICK, FACETED
Culet NONE
Finish
Polish VERY GOOD
Symmetry VERY GOOD
Clarity Grade VS2
Color Grade H
Fluorescence MEDIUM BLUE
Comments:
Pinpoints are not shown.

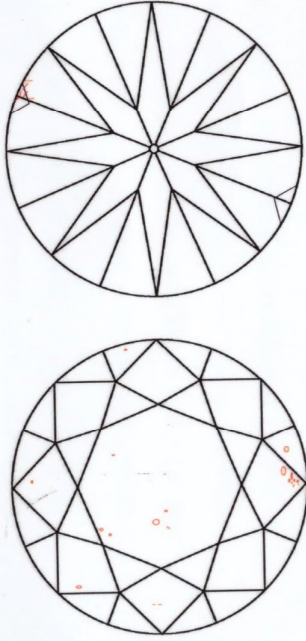


318607002

This Report is not a guarantee, valuation or appraisal. This Report contains only the characteristics of the diamond described herein after it has been graded, tested, examined and analyzed by GIA Gem Trade Laboratory under 10X magnification, and/or has been inscribed, using the techniques and equipment available to GIA Gem Trade Laboratory at the time of the examination and/or at the time of being inscribed, including fully corrected triplet loupe and binocular microscope, master color comparison diamonds, standardized viewing environment and light source, electronic carat balance, synthetic diamond screening device, high intensity short wave fluorescence imaging system, short wave ultraviolet transmission detection system, optical measuring device, micro laser inscribing device, ProportionScope[®], ultraviolet lamps, millimeter gauge, and ancillary instruments as necessary. Red symbols denote internal characteristics (inclusions). Green or black symbols denote external characteristics (blemishes). Diagram is an approximate representation of the diamond, and symbols shown indicate type, position, and approximate size of clarity characteristics. All clarity characteristics may not be shown. Details of finish are not shown. The recipient of this Report may wish to consult a credentialed Jeweler or Gemologist about the importance and interrelationship of cut, color, clarity and carat weight.

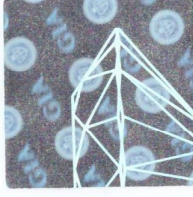
GIA CLARITY SCALE		GIA COLOR SCALE	
FLAWLESS	D	COLORLESS	
INTERNALLY FLAWLESS	E	NEAR COLORLESS	
VVS ₁	F		
VVS ₂	G		
VS ₁	H	FAINT	
VS ₂	I		
	J		
	K		
	L		
	M	VERY LIGHT	
	N		
	O		
	P		
	Q		
	R		
	S		
	T		
	U		
	V		
	W		
	X		
	Y		
	Z		

GIA CLARITY SCALE		GIA COLOR SCALE	
FLAWLESS	D	COLORLESS	
INTERNALLY FLAWLESS	E	NEAR COLORLESS	
VVS ₁	F		
VVS ₂	G		
VS ₁	H	FAINT	
VS ₂	I		
	J		
	K		
	L		
	M	VERY LIGHT	
	N		
	O		
	P		
	Q		
	R		
	S		
	T		
	U		
	V		
	W		
	X		
	Y		
	Z		



KEY TO SYMBOLS

- Crystal
- ~ Feather
- ∧ Needle
- ∧ Extra Facet



IMPORTANT DOCUMENT, STORE SAFELY

The security features in this document have been designed to ensure the integrity of the information and cannot be reproduced in any form without the express written permission of the Gemological Institute of America.

NOTICE: IMPORTANT LIMITATIONS ON BACK

COPYRIGHT ©2006 GEMOLOGICAL INSTITUTE OF AMERICA, INC.