



# GIA<sup>®</sup>

# eReport

[PRINT THIS REPORT](#)[REPORT RESULTS](#)[THE GIA 4CS](#)[ABOUT THE GIA DIAMOND eREPORT](#)[ABOUT GIA](#)

### GIA DIAMOND eREPORT

Report Date **February 25, 2026**  
 GIA Report Number **2231886489**  
 Shape and Cutting Style **Marquise Brilliant**  
 Measurements **7.83 x 4.24 x 2.62 mm**

### GRADING RESULTS - GIA 4CS

Carat Weight **0.51 carat**  
 Color Grade **H**  
 Clarity Grade **I1**

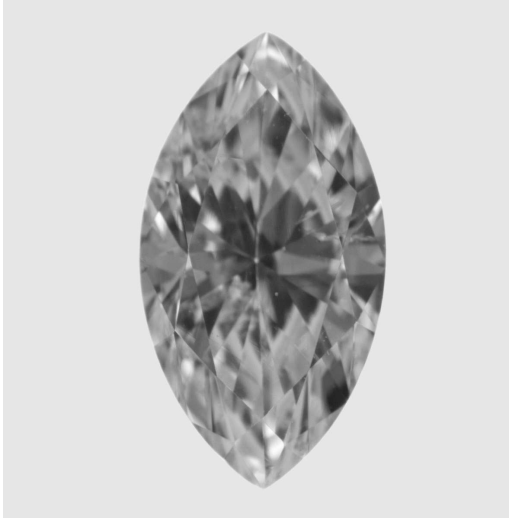
### ADDITIONAL GRADING INFORMATION

Polish **Good**  
 Symmetry **Fair**  
 Fluorescence **Strong Blue**

### IMPORTANT LIMITATIONS

The results documented in this report refer only to the diamond described, and were obtained using the techniques and equipment available to GIA at the time of examination. This report is not a guarantee or valuation. For additional information and important limitations and disclaimers, please see [www.gia.edu/terms](http://www.gia.edu/terms) or call +1 800 421 7250 or +1 760 603 4500. ©2012 Gemological Institute of America, Inc.

### IMAGE

[CLARITY CHARACTERISTICS](#)[PROPORTION DIAGRAM](#)

CHARACTERISTIC	LOCATION
Feather	Lower Half

The diamond in the image is enlarged and standardized to highlight some of its identifying characteristics such as shape, faceting and clarity; the image may not represent the diamond appearance under different viewing conditions.